



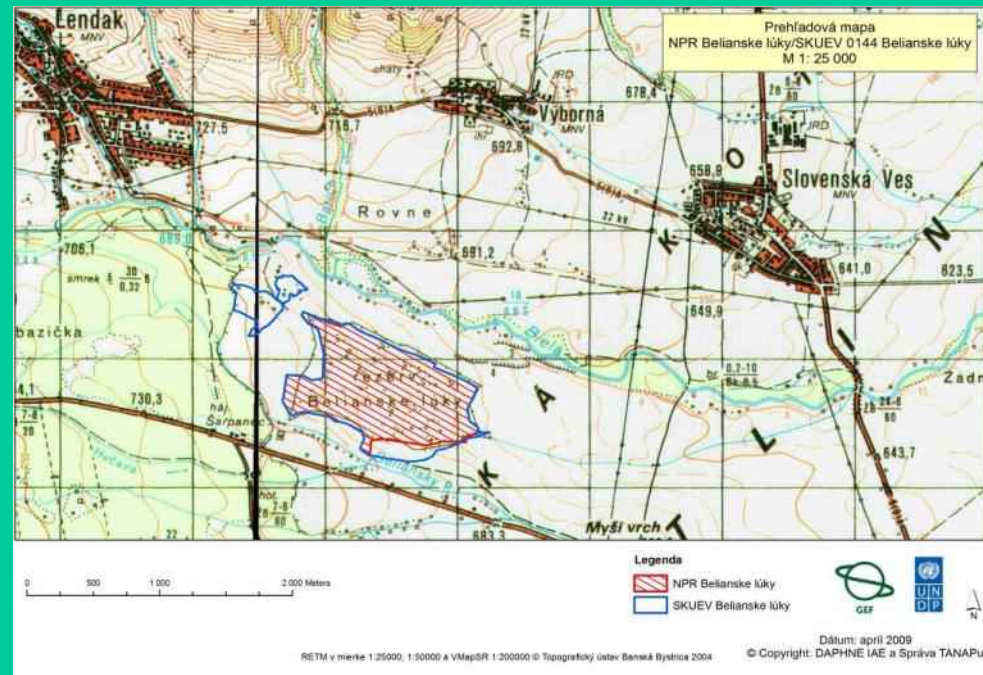
Belianske lúky Meadows

**Viera Šefferová Stanová
Tomáš Dražil**

The area forms the biggest spring fen system in Slovakia with extraordinary high value of biodiversity

Belianske lúky - protected area covering 85 ha, established in 1983.

The area was declared NATURA 2000 site in 2003 (105 ha)



Pedicularis sceptrum-carolinum



Calliergon trifarium



Landscape structure in 1949



1975



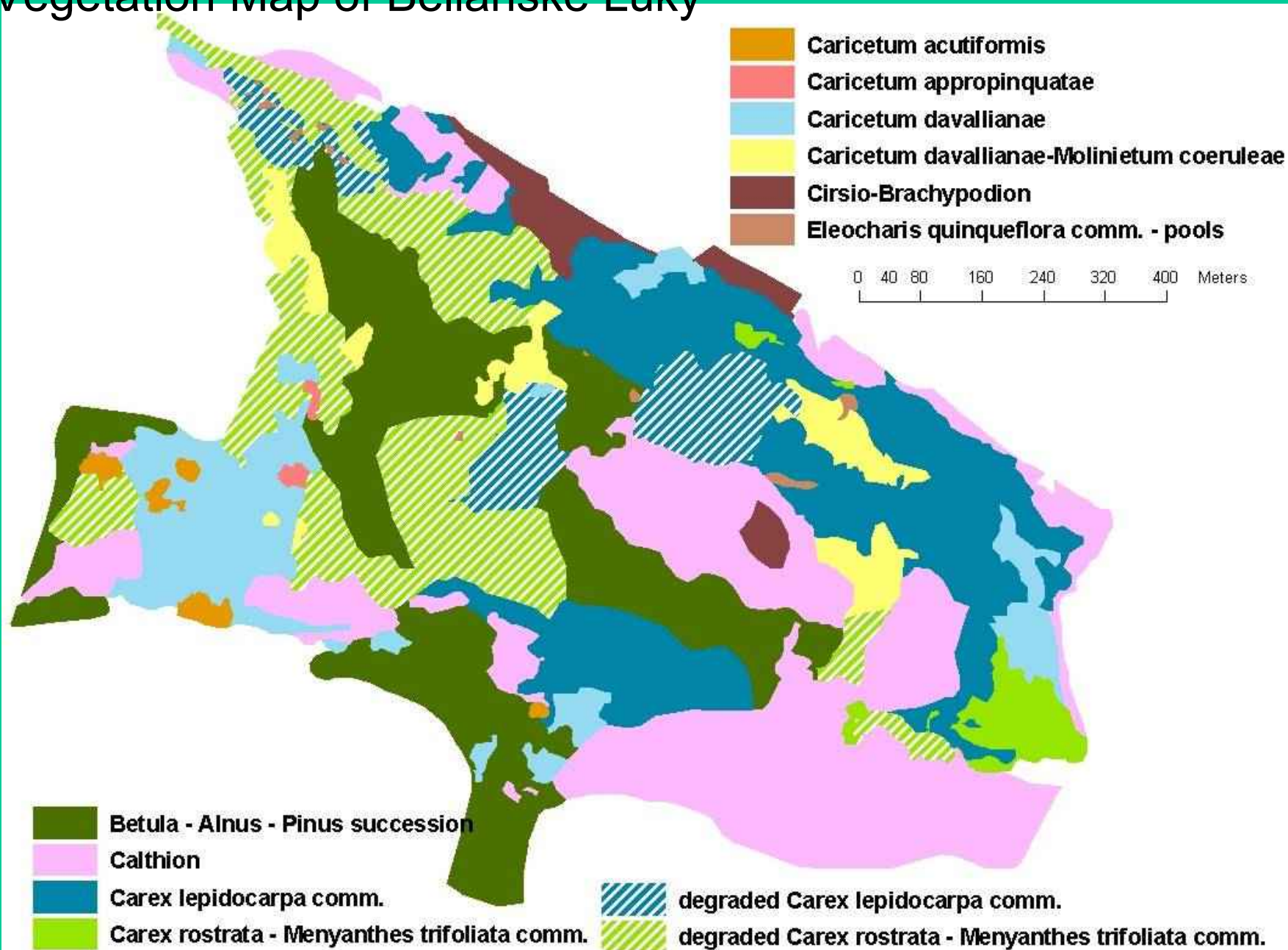
Landscape structure in 1992



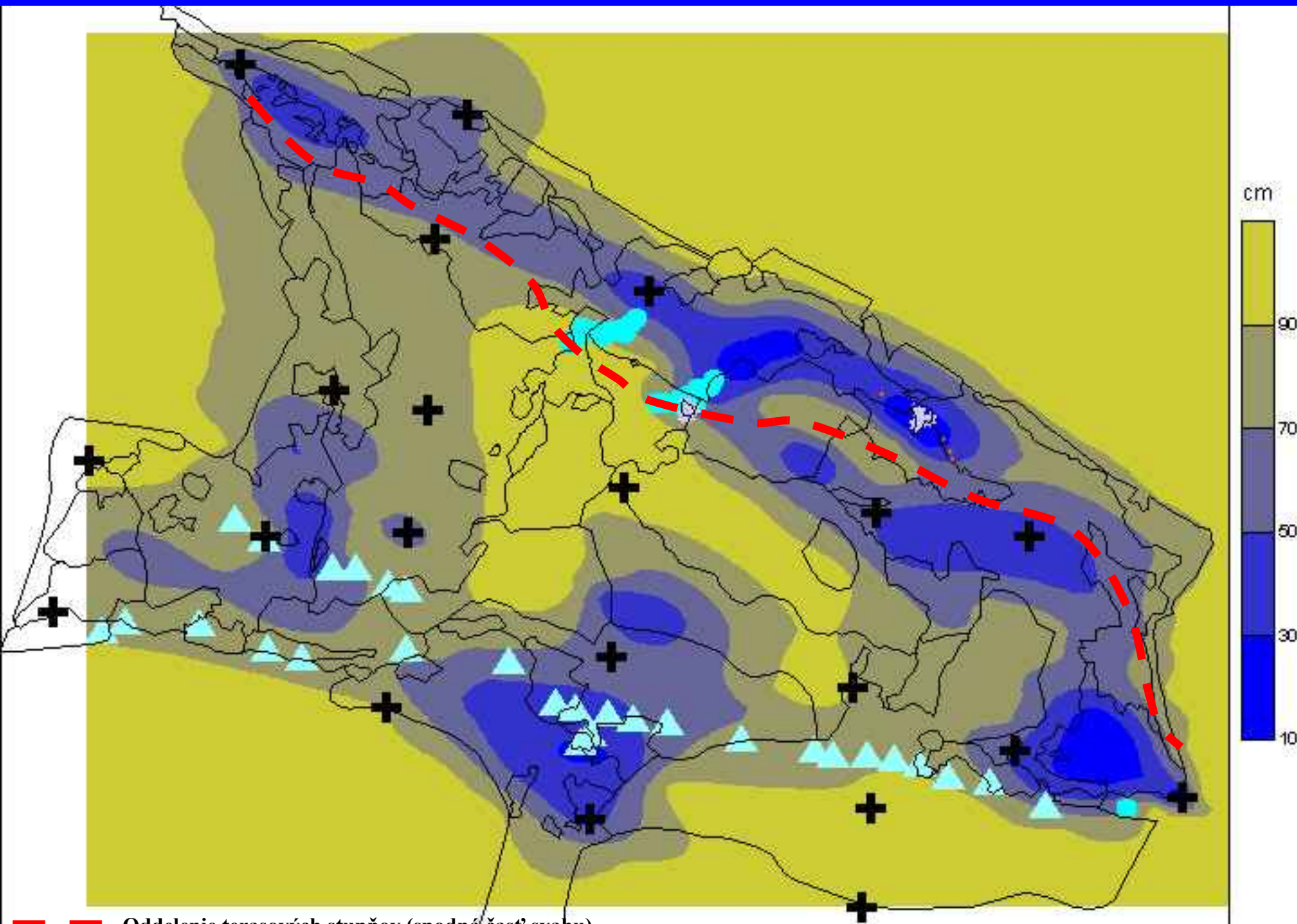


19. 10. 2004

Vegetation Map of Belianske Lúky



Underground water levels

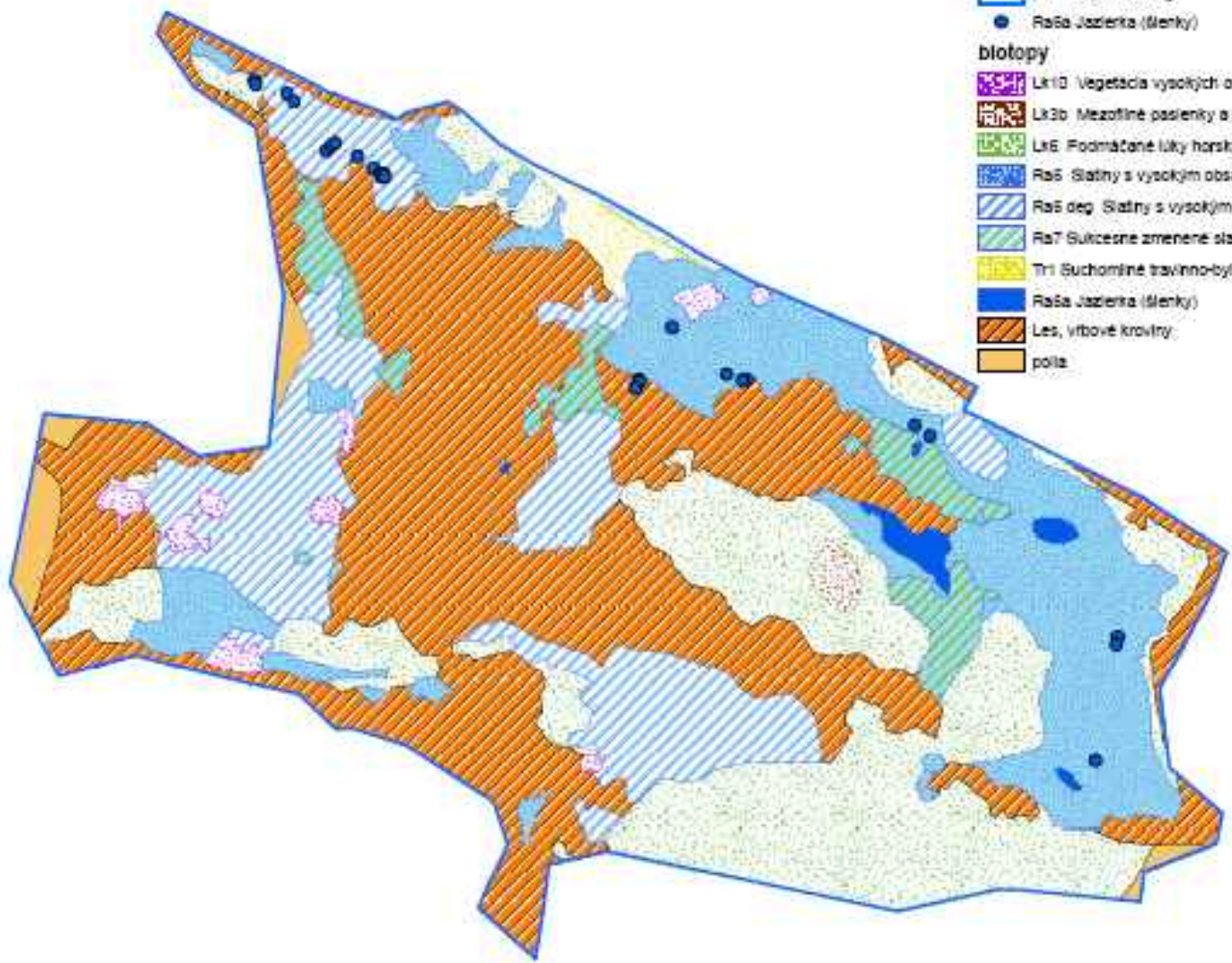


Habitat Map with their Evaluation

Mapa biotopov
NPR Belianske lúky
M 1: 7 000

Príloha č. 7.3. Mapa a prehľad vybraných prírodných prvkov
7.3.2. Mapa biotopov

- Legenda**
- NPR Belianske lúky
 - Raša Jazierka (šlenky)
- biotopy**
- Lk10 Vegetácia vysokých ostríc
 - Lk3b Mezoofilné pasienky a susedné lúky
 - Lk6 Podmačtané lúky horských a podhorských oblastí
 - Ra5 Slatiny s vysokým obsahom báz (v priaznivom stave)
 - Ra5 dep. Slatiny s vysokým obsahom báz (v nepriaznivom stave)
 - Ra7 Sukcesne zmenené slatiny
 - Tr1 Suchomilné trávno-bylinné a krovinné porasty na vápnom substráte
 - Raša Jazierka (šlenky)
 - Les, vrbové kroviny
 - poľa

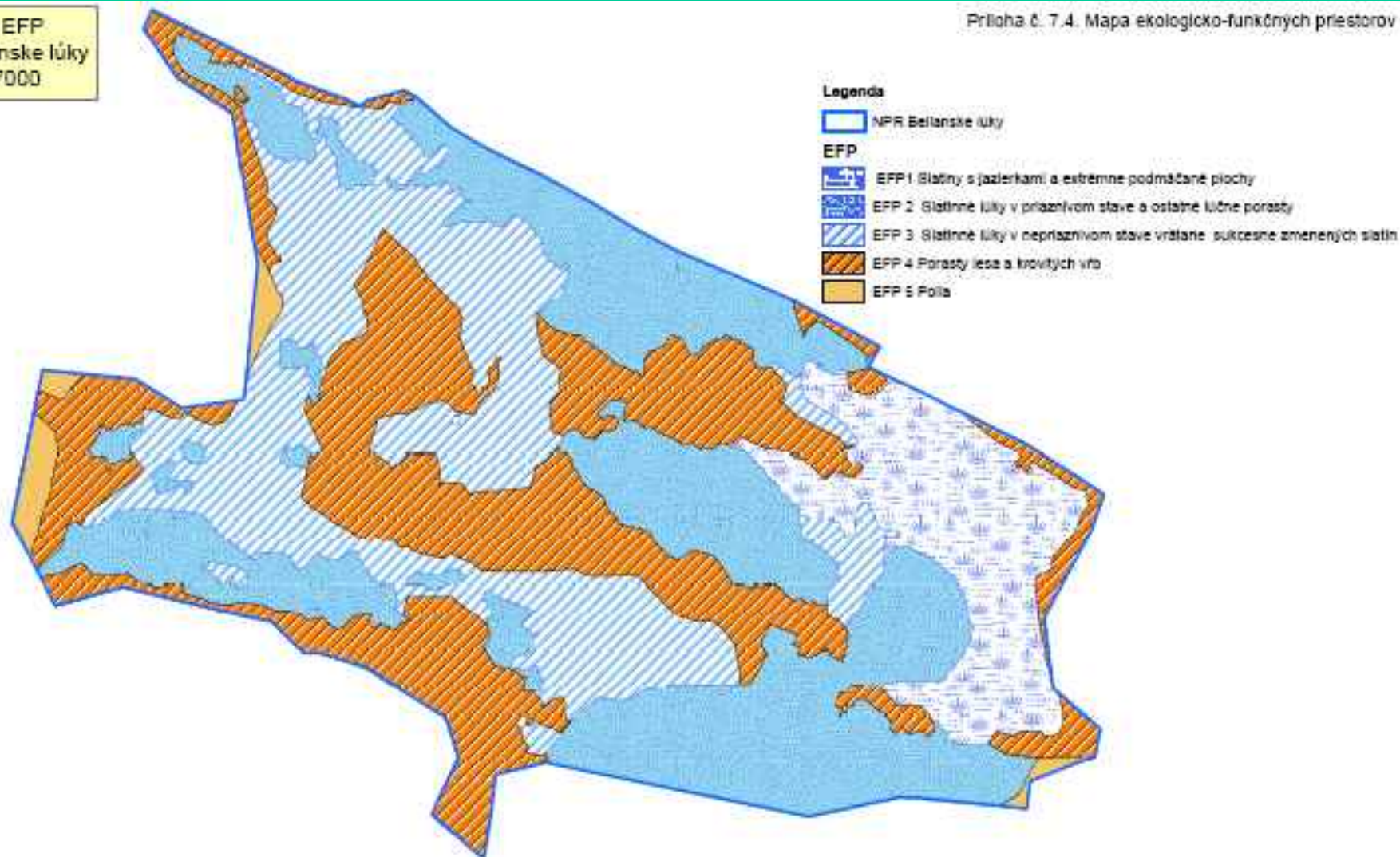


Code	Management planning units	Habitats	Type of management	Area (ha)	Management
MPU 1	Calcareous fens with pools	Ra6	Maintenance	9,60	Cutting of trees once per 5 years
MPU 2	Calcareous fens in favorable status and other grasslands	Ra6, Lk6, Lk10, Tr1, Lk3b	Maintenance	28,61	Maintenance model (according to RDP) for Type F: Wet and fen grasslands Mowing once a year, using light machinery
MPU 3	Calcareous fens in unfavorable status including fens changed by succession	Ra6 degraded, Ra7	Improvement	21,68	Restoration management (cutting, mulching) and then mowing according to PRV for type F: fen grasslands
MPU 4	Forest and shrub willows stands	Kr8	Potential improvement or maintenance	25,78	Restoration management can be applied
MPU 5	Fields		Improvement, maintenance	1,35	Improvement model for the part with beaver, maintenance for the rest
Total				86,98	

Map of Management planning units

Mapa EFP
NPR Belianske lúky
M 1: 7000

Príloha č. 7.4. Mapa ekologicke-funkčných priestorov



0 100 200 300 400 500 600 Meters



Results – restoration management

Cutting of trees – 34 ha



Mulching – 46 ha



Results – regular management

Local farmer has been mowing 42 ha since 2009, subsidies from the Rural Development Plan of the Slovak Republic for years 2008-2013 – agri-environmental schemes

326,67 € per ha





1. capturing of drainage water from drained areas and their converting by newly proposed pipe system to the eastern border of the reserve



2. Blocking of existing drainage system

Establishment of local steering committee



The educational programme on peatlands for school children

**Primary school in Lendak village –
around 430 participants**

